

WAVE RACK



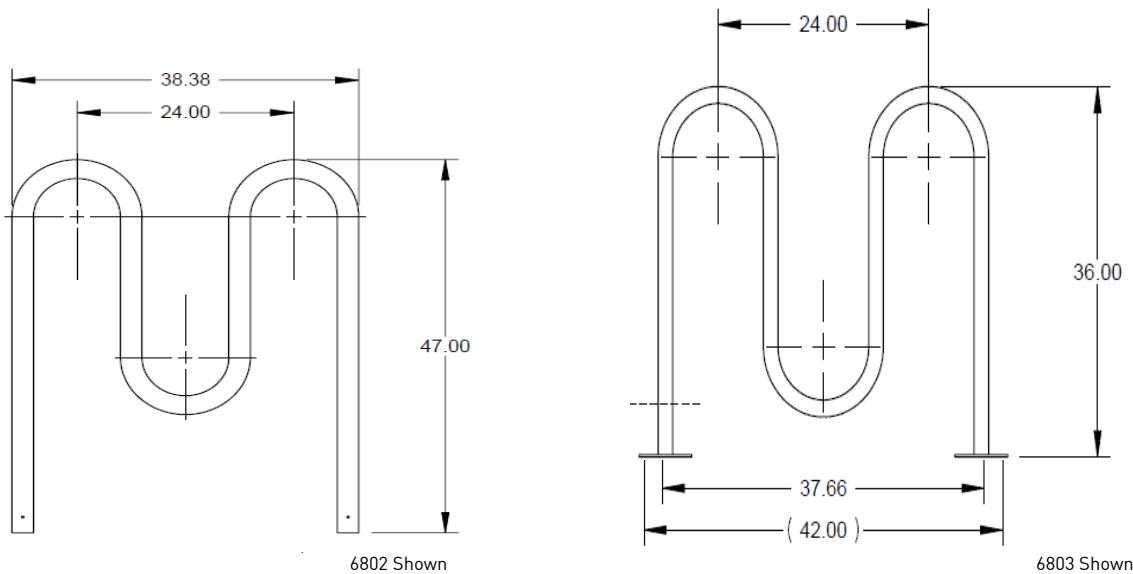
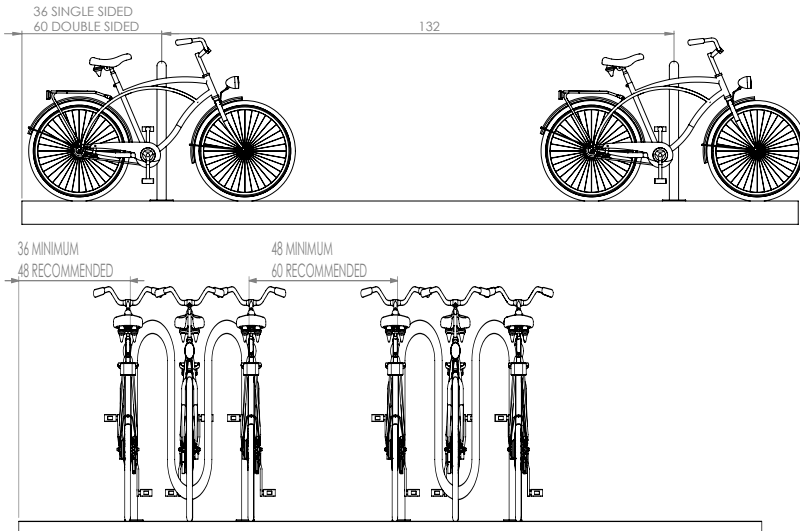
The Wave Rack offers a simple and compact way to park bikes. With a wide range of bike capacity options, the Wave Rack is a versatile option for meeting parking demands.

Product Specifications

- All steel tube in variety of sizes and shape
- 1.66" electrowelded steel tubing, 12 gauge
- 2.375" schedule 40 steel pipe, 9 gauge, 9" radius bend
- Spacing configurations provide multiple options to meet demands

Wave Rack

Recommended Setbacks



3-9 bikes



1.66", 12 gauge
2.375", 9 gauge



Powder Coat
Galvanized



Temporary Mount:
#28879
Permanent Mount:
#26270



1 year
warranty



Made in
the USA

Anchors must be purchased separately



Standard Colors



Flange Mount



Below Grade
Mount

Dimensions

Model #	# Bikes	Type of Mount	Weight	Length	Width	Height	Space Requirement
2.375"							
2102	5	Below Grade	57 lbs.	57"	2.4"	36"	87" x 110"
2103	5	Flange	60 lbs.	60"	6"	36"	87" x 110"
2105	7	Below Grade	90 lbs.	93"	2.4"	36"	123" x 110"
2106	7	Flange	95 lbs.	96"	6"	36"	123" x 110"
2108	9	Below Grade	108 lbs.	108"	2.4"	36"	159" x 110"
2109	9	Flange	111 lbs.	111"	6"	36"	159" x 110"
1.66"							
6802	5	Below Grade	26 lbs.	36"	2"	36"	66" x 110"
6803	5	Flange	29 lbs.	40"	6"	36"	66" x 110"
6805	7	Below Grade	38 lbs.	62"	2"	36"	92" x 110"
6806	7	Flange	40 lbs.	66"	6"	36"	92" x 110"
6808	9	Below Grade	54 lbs.	86"	2"	36"	116" x 110"
6809	9	Flange	60 lbs.	90"	6"	36"	116" x 110"

Our Saris Infrastructure representatives can assist with custom layout and spacing to meet your room dimensions and desired bike capacity.

Saris Infrastructure 800.783.7257

www.sarisinfrastructure.com

Downloadable product resources available online:



CAD Files



SketchUp Files



Written Specs



Photos